



THE MARSHALL ISLANDS REGISTRY

Fleet Statistics and Port State Control

Seagoing vessels of any tonnage engaged in foreign trade and vessels under construction are eligible for registration in the Republic of the Marshall Islands (RMI). Vessels should be under 20 years of age at the time of registration. Waivers may be granted for older vessels depending upon their condition and classification. Applications for vessels 15 years of age or older should be submitted with a Status Report of the vessel's Statutory Survey and Certification and a copy of its latest Intermediate or Special Survey Report. Ownership of RMI registered vessels must be through an RMI business entity. Entities such as corporations, general or limited partnerships, limited liability companies, or qualified foreign maritime entities are sufficient for this purpose.

The benefits of vessel registration under the RMI flag do not stop once the registration process is completed. Regulatory and technical assistance are available on the procedural aspects of operations during the entire time the vessel is registered under the flag.

International Registries, Inc. and its affiliates (IRI) provide administrative and technical support to the RMI Maritime and Corporate Registries. The RMI fleet is the youngest¹ in the world surpassing 202 million quality gross tons at the end of August 2024, and is the only registry globally to

achieve the United States Coast Guard's QUALSHIP 21 status for 20 consecutive years. The RMI is also on the White Lists of both the Paris and Tokyo Memorandums of Understanding. These factors, in addition to the Registry's investment in people and expertise, also contribute to the overall growth of the Registry.

The RMI fleet is committed to supporting the developing renewable energies and advanced technologies industries while also implementing new technologies in order to create a sustainable future. As shipping moves to achieve the International Maritime Organization's targets for greenhouse gas emissions reductions, greater awareness and concern is developing about the industry's environmental impact. As a result, sustainability criteria are playing a larger part in the financing of vessels. It is important that shipowners utilize a flag State that has the commitment and proven track record that is able to provide support in their journey toward sustainability compliance.

The most important asset to the RMI Registry is its customers, and IRI strives to provide them with full service from any of its 28 worldwide offices, 24 hours a day, seven days a week.

¹ Source: Clarksons Research's World Fleet Monitor, Volume 15, No.8 (August 2024).



The RMI Registry is the only registry globally to achieve United States Coast Guard's QUALSHIP 21 status for 20 consecutive years.



The **RMI fleet** is the **youngest**¹
in the **world** surpassing **202 million**
quality gross tons at the end of **August 2024**.

¹ Source: Clarksons Research's World Fleet Monitor, Volume 15, No.8 (August 2024).

Fleet Types

through 31 August 2024

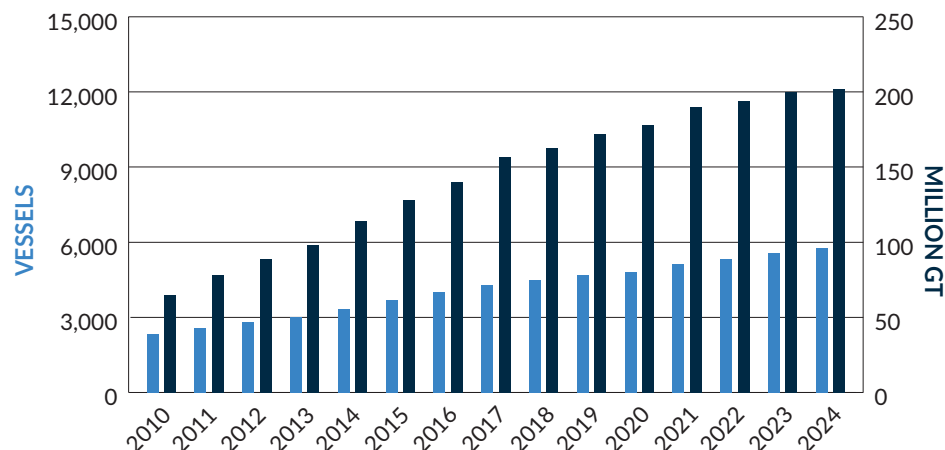
| VESSEL TYPE | NO. OF VESSELS | % OF FLEET | GROSS TONS | % OF FLEET GROSS TONS |
|------------------------------|----------------|--------------------------|------------|-----------------------|
| BULK CARRIER | 1,951 | 34% | 85,428,499 | 42% |
| CONTAINER | 340 | 6% | 13,899,511 | 7% |
| GAS CARRIER | 246 | 4% | 19,793,551 | 10% |
| GENERAL CARGO | 272 | 5% | 7,368,595 | 4% |
| MISCELLANEOUS | 95 | 2% | 630,525 | 0.31% |
| MOU | 173 | 3% | 7,465,750 | 4% |
| OSV | 313 | 5% | 611,379 | 0.30% |
| PASSENGER | 21 | 0.36% | 637,778 | 0.32% |
| TANKER | 1,334 | 23% | 65,922,040 | 33% |
| YACHT | 1020 | 18% | 261,885 | 0.13% |
| TOTAL FLEET (NO. OF VESSELS) | | TOTAL FLEET (GROSS TONS) | | |
| 5,765 | | 202,019,513 | | |

SERVICES INCLUDE:

- Vessel/Yacht Registration
- Mortgage and Lease Financing Recordation and Documentation
- Vessel Inspection
- Radio Station Licensing
- Officer and Crew Examination / Certification
- Seafarers' Identification and Record Books
- Technical Assistance
- Investigations
- Information on Maritime Regulations and Port Activities

Fleet Growth

through 31 August 2024



info@register-iri.com
www.register-iri.com

International Registries, Inc.
in affiliation with the Marshall Islands Maritime & Corporate Administrators